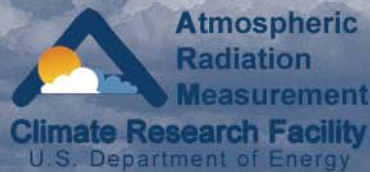




# **Infrastructure Overview 2006 ARM Science Team Meeting**

**Jimmy W. Voyles  
Technical Director  
ARM Climate Research Facility**



# Infrastructure Overview Outline

*Welcome to the ARM Science Team Meeting!*

# Infrastructure Overview

## Outline

- **Program Goals, Mission, and Objective**
- **Our Challenge**
- **The Organization**
- **Interactions and Process**
- **Key Contacts**
- **Closing Points and Questions**

# Infrastructure Overview Outline

- *Program Goals, Mission, and Objectives*
- **Our Challenge**
- **The Organization**
- **Interactions and Process**
- **Key Contacts**
- **Closing Points and Questions**



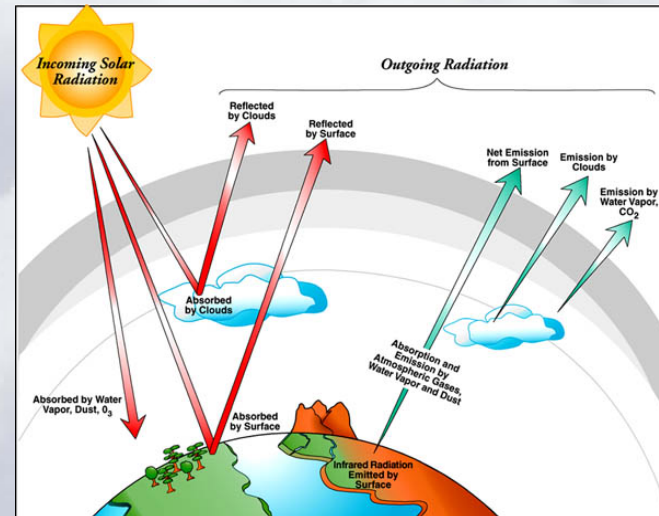
# Infrastructure Overview

## Program Goals

Provide the infrastructure at both fixed and mobile sites to meet the Atmospheric Radiation Measurement (ARM) Climate Research Facility (ACRF) mission and ARM science goals

### Primary ARM Science Goal

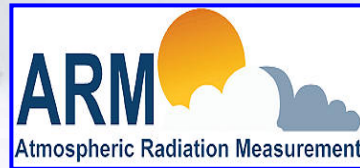
To improve climate models by developing and testing improved representation of cloud and radiative processes



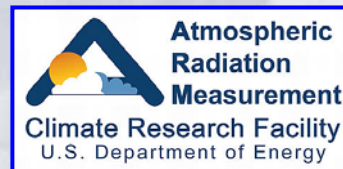
# Infrastructure Overview

## ARM and ACRF

- The ARM Program has two *separately funded* components
  - ARM science for grant funded science and research



- ACRF is the “Infrastructure”—a designated DOE Office of Science National User Facility



# Infrastructure Overview

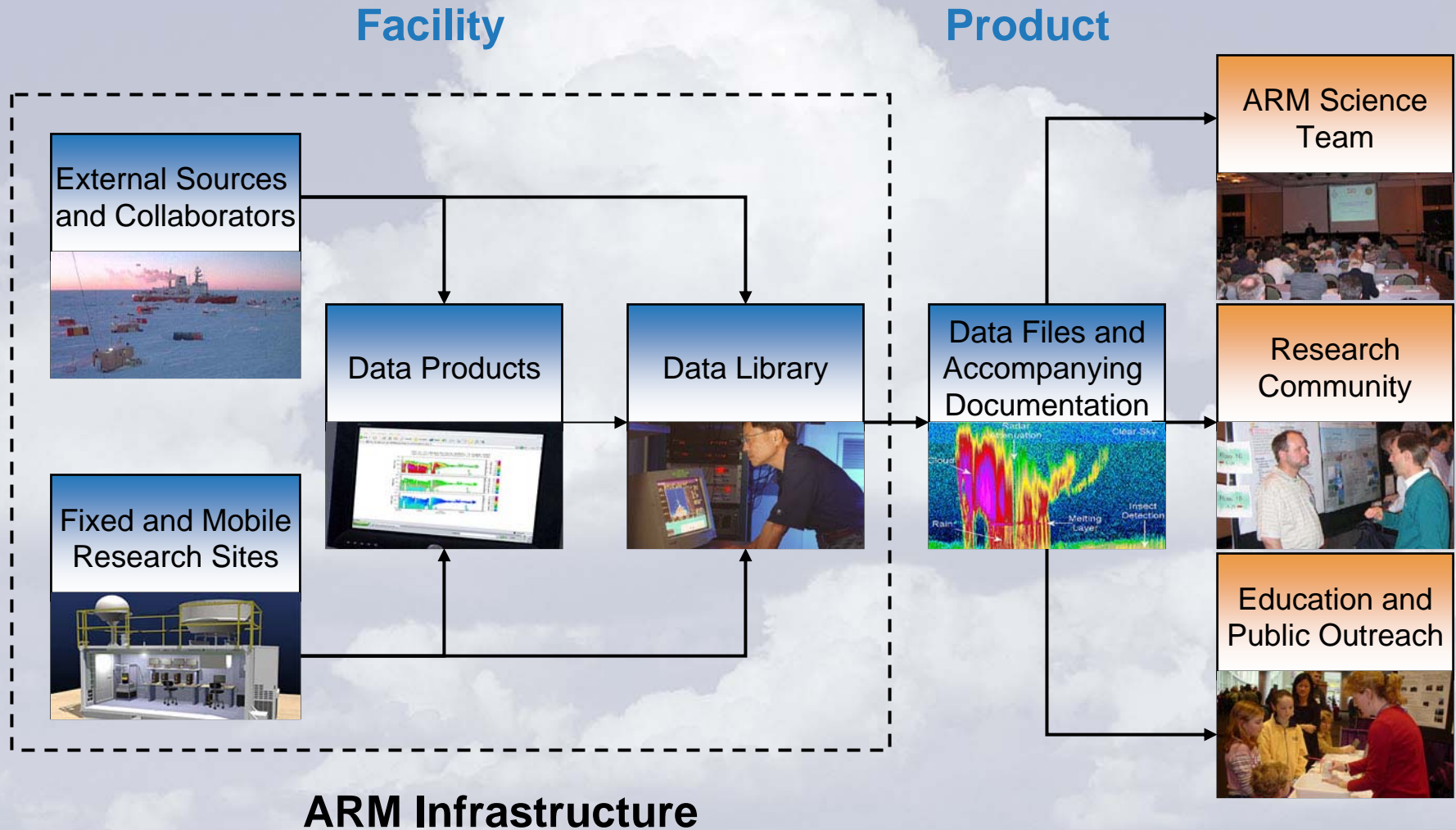
## ARM Climate Research Facility Mission

- Provide the national and international scientific community with the infrastructure needed for scientific research on global change
- Global change research includes the study of alterations to climate, land productivity, oceans, water cycle, atmospheric chemistry, and ecological systems



# Infrastructure Overview

## ARM Climate Research Facility Concept



### ARM Infrastructure



# Infrastructure Overview

## Infrastructure Objectives

- Manage and operate the ARM Climate Research Facility—a DOE Office of Science designated **national user facility**
- Improve and advance the efficiency and sustainability of our management, engineering, operations, and data usability processes



# Infrastructure Overview

## Outline

- **Program Goals, Mission, and Objective**
- *Our Challenge*
- **The Organization**
- **Interactions and Process**
- **Key Contacts**
- **Closing Points and Questions**

# Infrastructure Overview

## Our Challenge

- *Be World Leaders – in our field* by influencing the scientific or research strategy and results of national and international collaborators.
- *Be World Class – as an organization*, recognized by peer establishments as being in the top of our field in enabling the advancement of science or research goals. And, to be held as models for other organizations.

# Infrastructure Overview

## Our Challenge

### Imperatives

- *Environment*
- *Structure*
- *Leadership*
- *Strategy*
- *Commitment*





# Infrastructure Overview Outline

- **Program Goals, Mission, and Objective**
- **Our Challenge**
- *The Organization*
- **Interactions and Process**
- **Key Contacts**
- **Closing Points and Questions**

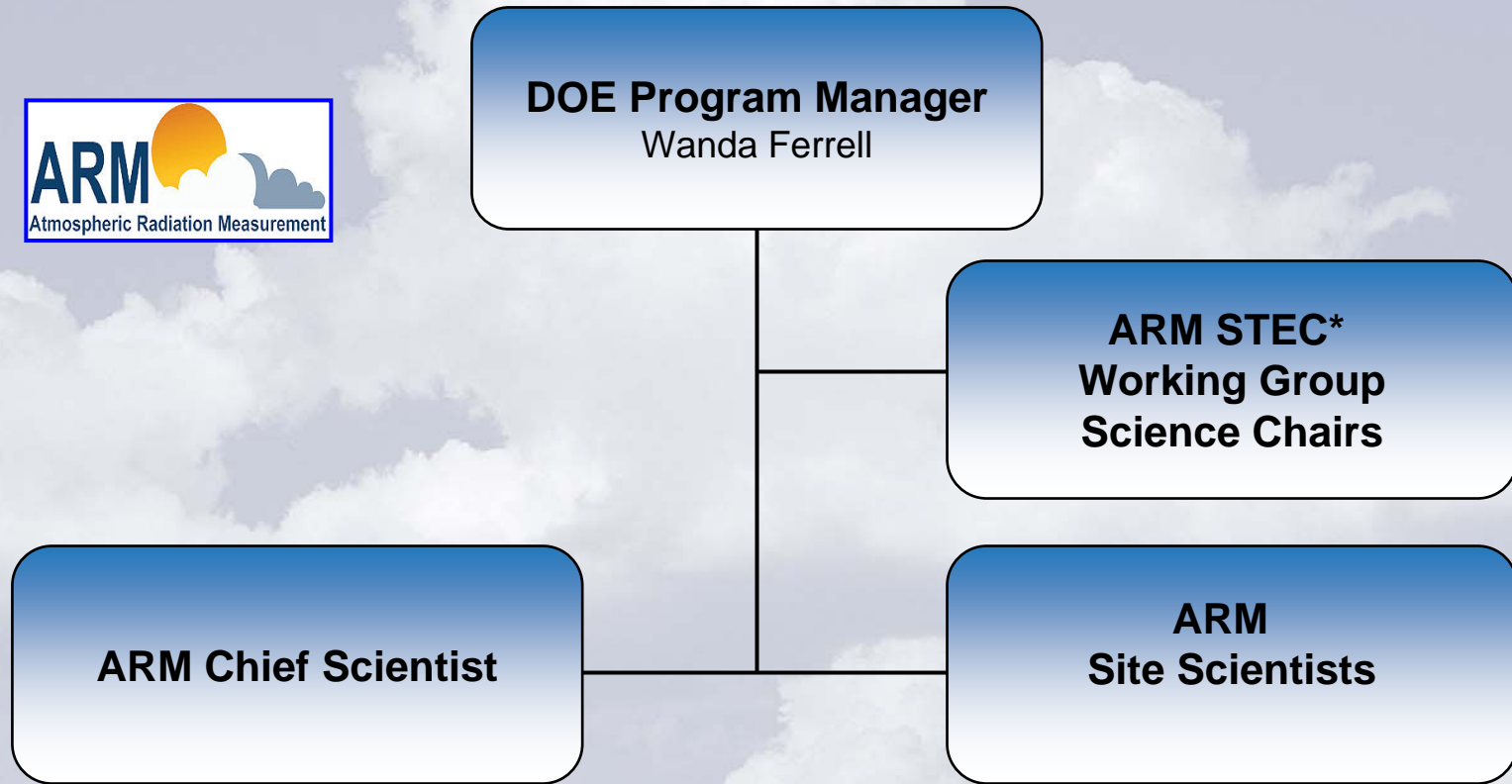
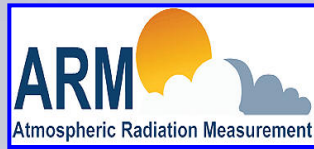
# Infrastructure Overview

## Our Organization

- DOE, multi-laboratory program; technical leadership activities conducted from:
  - **Argonne National Laboratory (ANL)**
  - **Oak Ridge National Laboratory (ORNL)**
  - **Pacific Northwest National Laboratory (PNL)**
  - **Brookhaven National Laboratory (BNL)**
  - **Lawrence Livermore National Laboratory (LLNL)**
  - **Sandia National Laboratories (SNL)**
  - **Los Alamos National Laboratory (LANL)**
  - **Lawrence Berkeley National Laboratory (LBL)**
  - **National Renewable Energy Laboratory (NREL)**
- DOE Office of Science program management works with the climate research community to establish our agenda

# Infrastructure Overview

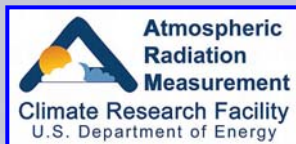
## ARM Science Management



\* STEC – Science Team Executive Committee

# Infrastructure Overview

## ACRF Management



**DOE Program Manager**  
Wanda Ferrell

**Facility Science Board**  
ARM STEC\* Working Group  
Science Chairs and Climate  
Research Community  
Appointees

**Infrastructure Management Board**  
Jimmy Voyles, Technical Director  
Sylvia Edgerton, Science Liaison  
Doug Sisterson, Operations Manager  
Raymond McCord, Archive Manager

**Archive**

Raymond McCord (ORNL)

**Operations**

Doug Sisterson (ANL)

**Engineering**

Jimmy Voyles (PNNL)



# Infrastructure Overview

## Outline

- **Program Goals, Mission, and Objective**
- **Our Challenge**
- **The Organization**
- *Interactions and Process*
- **Key Contacts**
- **Closing Points and Questions**

# Infrastructure Overview

## Interactions and Process

- Actions of the infrastructure are driven by the science and research needs
- Engineering, Operations, and the Archive are “prime movers”

### Engineering:

- Instrumentation
- Computing and Networks
- Data Quality
- Value Added Processing

### Operations:

- Research Sites
- Instruments
- Data Processing
- Safety

### Archive:

- Data Storage
- Data Delivery

# Infrastructure Overview

## Interactions and Process

- You can help us evolve and improve
- By providing feedback as you interact with ARM products, research sites, and processes

### Science Working Groups:

- Measurements and Instrumentation
- Field Campaigns
- Value Added Products
- Tools and Applications

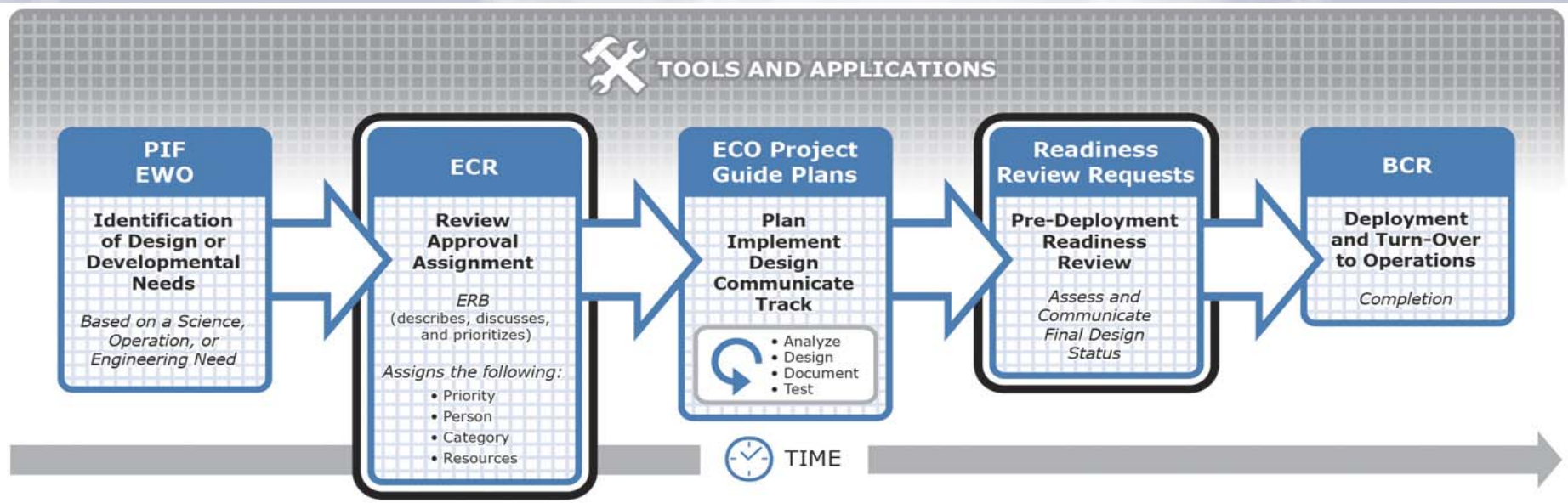
### ARM Website:

- Measurement Performance
- Data Quality
- Engineering/Operations Processes
- Information Content

# Infrastructure Overview Interactions and Process

Engineering and Operational Processes

*“Transform ideas into new products”*



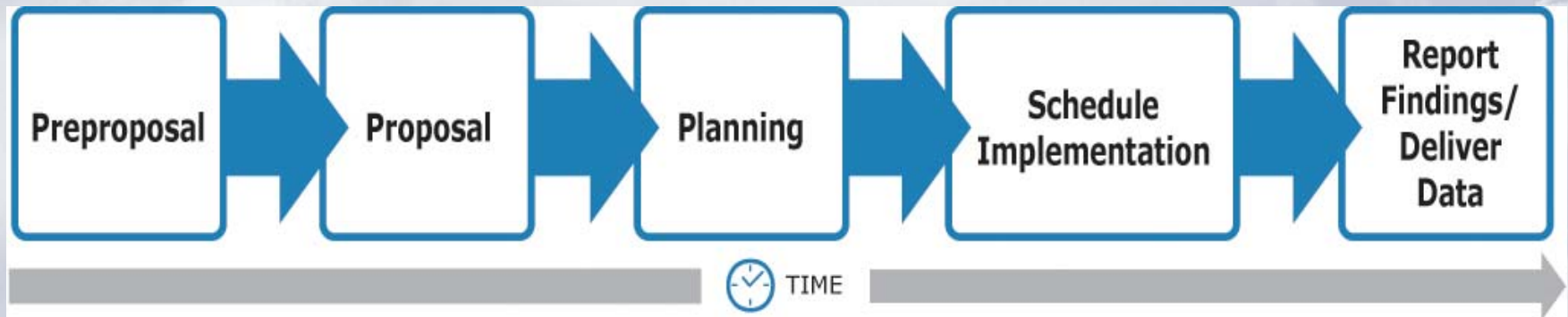
***“[www.arm.gov/acrf/capabilities.stm](http://www.arm.gov/acrf/capabilities.stm)”***



# Infrastructure Overview Interactions and Process

Field Campaign and Intensive Operational Period Processes

*“Augment routine data acquisition and test new measurement technologies”*



**[www.arm.gov/science/fc.stm](http://www.arm.gov/science/fc.stm)**

# Infrastructure Overview Outline

- **Program Goals, Mission, and Objective**
- **Our Challenge**
- **The Organization**
- **Interactions and Process**
- *Key Contacts*
- **Closing Points and Questions**

# Infrastructure Overview

## Key Contacts

Rosemary Ross	Technical Coordination Office	<a href="mailto:rosemary.ross@pnl.gov">rosemary.ross@pnl.gov</a>	509.375.2111
Luci Walker	Financial Administration	<a href="mailto:lucille.walker@pnl.gov">lucille.walker@pnl.gov</a>	509.375.2810
Laurel Chapman	Field Campaigns	<a href="mailto:lachapman@anl.gov">lachapman@anl.gov</a>	630.252.2887
Susan Turner	Contracting	<a href="mailto:susan.turner@pnl.gov">susan.turner@pnl.gov</a>	509.375.3810
Rolanda Jundt	Website Development	<a href="mailto:rolanda.jundt@pnl.gov">rolanda.jundt@pnl.gov</a>	509.375.2936
Nancy Burleigh	Communications and Publications	<a href="mailto:nancy.burleigh@pnl.gov">nancy.burleigh@pnl.gov</a>	509.375.2785
Lynne Roeder	Public Information Officer	<a href="mailto:lynne.roeder@pnl.gov">lynne.roeder@pnl.gov</a>	509.372.4331
Jan Gunter	Engineering Administrator	<a href="mailto:janice.gunter@pnl.gov">janice.gunter@pnl.gov</a>	509.375.6580
Jimmy Voyles	Technical Director / <b>IMB</b>	<a href="mailto:jimmy.voyles@pnl.gov">jimmy.voyles@pnl.gov</a>	509.372.4856
Doug Sisterson	Operations Manager / <b>IMB</b>	<a href="mailto:dlsisterson@anl.gov">dlsisterson@anl.gov</a>	630.252.5836
Sylvia Edgerton	Science Liaison / <b>IMB</b>	<a href="mailto:sylvia.edgerton@pnl.gov">sylvia.edgerton@pnl.gov</a>	703.300.4290
Raymond McCord	Archive Manager / <b>IMB</b>	<a href="mailto:mccordra@ornl.gov">mccordra@ornl.gov</a>	865.574.7827
Randy Pepler	Data Quality Office	<a href="mailto:rpepler@ou.edu">rpepler@ou.edu</a>	405.325.6667
Jim Liljegren	Instrument Coordinator	<a href="mailto:jliljegren@anl.gov">jliljegren@anl.gov</a>	630.252.9540
Kevin Widener	Chief Engineer	<a href="mailto:kevin.widener@pnl.gov">kevin.widener@pnl.gov</a>	509.375.2487
Dick Eagan	Data System Coordinator	<a href="mailto:dick.eagan@anl.gov">dick.eagan@anl.gov</a>	630.252.3435
Rick Wagener	External Data Center Manager	<a href="mailto:wagener@bnl.gov">wagener@bnl.gov</a>	631.344.5886
Todd Halter	Lead Software Developer	<a href="mailto:todd.halter@pnl.gov">todd.halter@pnl.gov</a>	509.375.2979
Nicole Keck	Data Management Facility Manager	<a href="mailto:nicole.keck@pnl.gov">nicole.keck@pnl.gov</a>	509.375.6479
Chuck Long	Lead Science Translator	<a href="mailto:chuck.long@pnl.gov">chuck.long@pnl.gov</a>	509.372.4917

# Infrastructure Overview

## Key Contacts

<b>Rosemary Ross</b>	Technical Coordination Office	<a href="mailto:rosemary.ross@pnl.gov">rosemary.ross@pnl.gov</a>	509.375.2111
<b>Luci Walker</b>	Financial Administration	<a href="mailto:lucille.walker@pnl.gov">lucille.walker@pnl.gov</a>	509.375.2810
<b>Laurel Chapman</b>	Field Campaigns	<a href="mailto:lachapman@anl.gov">lachapman@anl.gov</a>	630.252.2887
<b>Susan Turner</b>	Contracting	<a href="mailto:susan.turner@pnl.gov">susan.turner@pnl.gov</a>	509.375.3810
<b>Rolanda Jundt</b>	Website Development	<a href="mailto:rolanda.jundt@pnl.gov">rolanda.jundt@pnl.gov</a>	509.375.2936
<b>Nancy Burleigh</b>	Communications and Publications	<a href="mailto:nancy.burleigh@pnl.gov">nancy.burleigh@pnl.gov</a>	509.375.2785
<b>Lynne Roeder</b>	Public Information Officer	<a href="mailto:lynne.roeder@pnl.gov">lynne.roeder@pnl.gov</a>	509.372.4331
<b>Jan Gunter</b>	Engineering Administrator	<a href="mailto:janice.gunter@pnl.gov">janice.gunter@pnl.gov</a>	509.375.6580
<b>Jimmy Voyles</b>	Technical Director / <b>IMB</b>	<a href="mailto:jimmy.voyles@pnl.gov">jimmy.voyles@pnl.gov</a>	509.372.4856
<b>Doug Sisterson</b>	Operations Manager / <b>IMB</b>	<a href="mailto:dlsisterson@anl.gov">dlsisterson@anl.gov</a>	630.252.5836
<b>Sylvia Edgerton</b>	Science Liaison / <b>IMB</b>	<a href="mailto:sylvia.edgerton@pnl.gov">sylvia.edgerton@pnl.gov</a>	703.300.4290
<b>Raymond McCord</b>	Archive Manager / <b>IMB</b>	<a href="mailto:mccordra@ornl.gov">mccordra@ornl.gov</a>	865.574.7827
<b>Randy Pepler</b>	Data Quality Office	<a href="mailto:rpepler@ou.edu">rpepler@ou.edu</a>	405.325.6667
<b>Jim Liljegren</b>	Instrument Coordinator	<a href="mailto:jliljegren@anl.gov">jliljegren@anl.gov</a>	630.252.9540
<b>Kevin Widener</b>	Chief Engineer	<a href="mailto:kevin.widener@pnl.gov">kevin.widener@pnl.gov</a>	509.375.2487
<b>Dick Eagan</b>	Data System Coordinator	<a href="mailto:dick.eagan@anl.gov">dick.eagan@anl.gov</a>	630.252.3435
<b>Rick Wagener</b>	External Data Center Manager	<a href="mailto:wagener@bnl.gov">wagener@bnl.gov</a>	631.344.5886
<b>Todd Halter</b>	Lead Software Developer	<a href="mailto:todd.halter@pnl.gov">todd.halter@pnl.gov</a>	509.375.2979
<b>Nicole Keck</b>	Data Management Facility Manager	<a href="mailto:nicole.keck@pnl.gov">nicole.keck@pnl.gov</a>	509.375.6479
<b>Chuck Long</b>	Lead Science Translator	<a href="mailto:chuck.long@pnl.gov">chuck.long@pnl.gov</a>	509.372.4917

Field Campaigns, Contracting, and Administration



# Infrastructure Overview

## Key Contacts

Rosemary Ross	Technical Coordination Office	<a href="mailto:rosemary.ross@pnl.gov">rosemary.ross@pnl.gov</a>	509.375.2111
Luci Walker	Financial Administration	<a href="mailto:lucille.walker@pnl.gov">lucille.walker@pnl.gov</a>	509.375.2810
Laurel Chapman	Field Campaigns	<a href="mailto:lachapman@anl.gov">lachapman@anl.gov</a>	630.252.2887
Susan Turner	Contracting	<a href="mailto:susan.turner@pnl.gov">susan.turner@pnl.gov</a>	509.375.3810
Rolanda Jundt	Website Development	<a href="mailto:rolanda.jundt@pnl.gov">rolanda.jundt@pnl.gov</a>	509.375.2936
Nancy Burleigh	Communications and Publications	<a href="mailto:nancy.burleigh@pnl.gov">nancy.burleigh@pnl.gov</a>	509.375.2785
Lynne Roeder	Public Information Officer	<a href="mailto:lynne.roeder@pnl.gov">lynne.roeder@pnl.gov</a>	509.372.4331
Jan Gunter	Engineering Administrator	<a href="mailto:janice.gunter@pnl.gov">janice.gunter@pnl.gov</a>	509.375.6580
Jimmy Voyles	Technical Director / <b>IMB</b>	<a href="mailto:jimmy.voyles@pnl.gov">jimmy.voyles@pnl.gov</a>	509.372.4856
Doug Sisterson	Operations Manager / <b>IMB</b>	<a href="mailto:dlsisterson@anl.gov">dlsisterson@anl.gov</a>	630.252.5836
Sylvia Edgerton	Science Liaison / <b>IMB</b>	<a href="mailto:sylvia.edgerton@pnl.gov">sylvia.edgerton@pnl.gov</a>	703.300.4290
Raymond McCord	Archive Manager / <b>IMB</b>	<a href="mailto:mccordra@ornl.gov">mccordra@ornl.gov</a>	865.574.7827
Randy Pepler	Data Quality Office	<a href="mailto:rpepler@ou.edu">rpepler@ou.edu</a>	405.325.6667
Jim Liljegren	Instrument Coordinator	<a href="mailto:jliljegren@anl.gov">jliljegren@anl.gov</a>	630.252.9540
Kevin Widener	Chief Engineer	<a href="mailto:kevin.widener@pnl.gov">kevin.widener@pnl.gov</a>	509.375.2487
Dick Eagan	Data System Coordinator	<a href="mailto:dick.eagan@anl.gov">dick.eagan@anl.gov</a>	630.252.3435
Rick Wagener	External Data Center Manager	<a href="mailto:wagener@bnl.gov">wagener@bnl.gov</a>	631.344.5886
Todd Halter	Lead Software Developer	<a href="mailto:todd.halter@pnl.gov">todd.halter@pnl.gov</a>	509.375.2979
Nicole Keck	Data Management Facility Manager	<a href="mailto:nicole.keck@pnl.gov">nicole.keck@pnl.gov</a>	509.375.6479
Chuck Long	Lead Science Translator	<a href="mailto:chuck.long@pnl.gov">chuck.long@pnl.gov</a>	509.372.4917

Website, Publications, and Communications

# Infrastructure Overview

## Key Contacts

Rosemary Ross	Technical Coordination Office	<a href="mailto:rosemary.ross@pnl.gov">rosemary.ross@pnl.gov</a>	509.375.2111
Luci Walker	Financial Administration	<a href="mailto:lucille.walker@pnl.gov">lucille.walker@pnl.gov</a>	509.375.2810
Laurel Chapman	Field Campaigns	<a href="mailto:lachapman@anl.gov">lachapman@anl.gov</a>	630.252.2887
Susan Turner	Contracting	<a href="mailto:susan.turner@pnl.gov">susan.turner@pnl.gov</a>	509.375.3810
Rolanda Jundt	Website Development	<a href="mailto:rolanda.jundt@pnl.gov">rolanda.jundt@pnl.gov</a>	509.375.2936
Nancy Burleigh	Communications and Publications	<a href="mailto:nancy.burleigh@pnl.gov">nancy.burleigh@pnl.gov</a>	509.375.2785
Lynne Roeder	Public Information Officer	<a href="mailto:lynne.roeder@pnl.gov">lynne.roeder@pnl.gov</a>	509.372.4331
Jan Gunter	Engineering Administrator	<a href="mailto:janice.gunter@pnl.gov">janice.gunter@pnl.gov</a>	509.375.6580
Jimmy Voyles	Technical Director / <b>IMB</b>	<a href="mailto:jimmy.voyles@pnl.gov">jimmy.voyles@pnl.gov</a>	509.372.4856
Doug Sisterson	Operations Manager / <b>IMB</b>	<a href="mailto:dlsisterson@anl.gov">dlsisterson@anl.gov</a>	630.252.5836
Sylvia Edgerton	Science Liaison / <b>IMB</b>	<a href="mailto:sylvia.edgerton@pnl.gov">sylvia.edgerton@pnl.gov</a>	703.300.4290
Raymond McCord	Archive Manager / <b>IMB</b>	<a href="mailto:mccordra@ornl.gov">mccordra@ornl.gov</a>	865.574.7827
Randy Pepler	Data Quality Office	<a href="mailto:rpepler@ou.edu">rpepler@ou.edu</a>	405.325.6667
Jim Liljegren	Instrument Coordinator	<a href="mailto:jliljegren@anl.gov">jliljegren@anl.gov</a>	630.252.9540
Kevin Widener	Chief Engineer	<a href="mailto:kevin.widener@pnl.gov">kevin.widener@pnl.gov</a>	509.375.2487
Dick Eagan	Data System Coordinator	<a href="mailto:dick.eagan@anl.gov">dick.eagan@anl.gov</a>	630.252.3435
Rick Wagener	External Data Center Manager	<a href="mailto:wagener@bnl.gov">wagener@bnl.gov</a>	631.344.5886
Todd Halter	Lead Software Developer	<a href="mailto:todd.halter@pnl.gov">todd.halter@pnl.gov</a>	509.375.2979
Nicole Keck	Data Management Facility Manager	<a href="mailto:nicole.keck@pnl.gov">nicole.keck@pnl.gov</a>	509.375.6479
Chuck Long	Lead Science Translator	<a href="mailto:chuck.long@pnl.gov">chuck.long@pnl.gov</a>	509.372.4917

Engineering

# Infrastructure Overview

## Key Contacts

Rosemary Ross	Technical Coordination Office	<a href="mailto:rosemary.ross@pnl.gov">rosemary.ross@pnl.gov</a>	509.375.2111
Luci Walker	Financial Administration	<a href="mailto:lucille.walker@pnl.gov">lucille.walker@pnl.gov</a>	509.375.2810
Laurel Chapman	Field Campaigns	<a href="mailto:lachapman@anl.gov">lachapman@anl.gov</a>	630.252.2887
Susan Turner	Contracting	<a href="mailto:susan.turner@pnl.gov">susan.turner@pnl.gov</a>	509.375.3810
Rolanda Jundt	Website Development	<a href="mailto:rolanda.jundt@pnl.gov">rolanda.jundt@pnl.gov</a>	509.375.2936
Nancy Burleigh	Communications and Publications	<a href="mailto:nancy.burleigh@pnl.gov">nancy.burleigh@pnl.gov</a>	509.375.2785
Lynne Roeder	Public Information Officer	<a href="mailto:lynne.roeder@pnl.gov">lynne.roeder@pnl.gov</a>	509.372.4331
Jan Gunter	Engineering Administrator	<a href="mailto:janice.gunter@pnl.gov">janice.gunter@pnl.gov</a>	509.375.6580
Jimmy Voyles	Technical Director / <b>IMB</b>	<a href="mailto:jimmy.voyles@pnl.gov">jimmy.voyles@pnl.gov</a>	509.372.4856
Doug Sisterson	Operations Manager / <b>IMB</b>	<a href="mailto:dlsisterson@anl.gov">dlsisterson@anl.gov</a>	630.252.5836
Sylvia Edgerton	Science Liaison / <b>IMB</b>	<a href="mailto:sylvia.edgerton@pnl.gov">sylvia.edgerton@pnl.gov</a>	703.300.4290
Raymond McCord	Archive Manager / <b>IMB</b>	<a href="mailto:mccordra@ornl.gov">mccordra@ornl.gov</a>	865.574.7827
Randy Pepler	Data Quality Office	<a href="mailto:rpepler@ou.edu">rpepler@ou.edu</a>	405.325.6667
Jim Liljegren	Instrument Coordinator	<a href="mailto:jliljegren@anl.gov">jliljegren@anl.gov</a>	630.252.9540
Kevin Widener	Chief Engineer	<a href="mailto:kevin.widener@pnl.gov">kevin.widener@pnl.gov</a>	509.375.2487
Dick Eagan	Data System Coordinator	<a href="mailto:dick.eagan@anl.gov">dick.eagan@anl.gov</a>	630.252.3435
Rick Wagener	External Data Center Manager	<a href="mailto:wagener@bnl.gov">wagener@bnl.gov</a>	631.344.5886
Todd Halter	Lead Software Developer	<a href="mailto:todd.halter@pnl.gov">todd.halter@pnl.gov</a>	509.375.2979
Nicole Keck	Data Management Facility Manager	<a href="mailto:nicole.keck@pnl.gov">nicole.keck@pnl.gov</a>	509.375.6479
Chuck Long	Lead Science Translator	<a href="mailto:chuck.long@pnl.gov">chuck.long@pnl.gov</a>	509.372.4917

Data Product Delivery and Quality

# Infrastructure Overview

## Key Contacts

Rosemary Ross	Technical Coordination Office	<a href="mailto:rosemary.ross@pnl.gov">rosemary.ross@pnl.gov</a>	509.375.2111
Luci Walker	Financial Administration	<a href="mailto:lucille.walker@pnl.gov">lucille.walker@pnl.gov</a>	509.375.2810
Laurel Chapman	Field Campaigns	<a href="mailto:lachapman@anl.gov">lachapman@anl.gov</a>	630.252.2887
Susan Turner	Contracting	<a href="mailto:susan.turner@pnl.gov">susan.turner@pnl.gov</a>	509.375.3810
Rolanda Jundt	Website Development	<a href="mailto:rolanda.jundt@pnl.gov">rolanda.jundt@pnl.gov</a>	509.375.2936
Nancy Burleigh	Communications and Publications	<a href="mailto:nancy.burleigh@pnl.gov">nancy.burleigh@pnl.gov</a>	509.375.2785
Lynne Roeder	Public Information Officer	<a href="mailto:lynne.roeder@pnl.gov">lynne.roeder@pnl.gov</a>	509.372.4331
Jan Gunter	Engineering Administrator	<a href="mailto:janice.gunter@pnl.gov">janice.gunter@pnl.gov</a>	509.375.6580
Jimmy Voyles	Technical Director / <b>IMB</b>	<a href="mailto:jimmy.voyles@pnl.gov">jimmy.voyles@pnl.gov</a>	509.372.4856
Doug Sisterson	Operations Manager / <b>IMB</b>	<a href="mailto:dlsisterson@anl.gov">dlsisterson@anl.gov</a>	630.252.5836
Sylvia Edgerton	Science Liaison / <b>IMB</b>	<a href="mailto:sylvia.edgerton@pnl.gov">sylvia.edgerton@pnl.gov</a>	703.300.4290
Raymond McCord	Archive Manager / <b>IMB</b>	<a href="mailto:mccordra@ornl.gov">mccordra@ornl.gov</a>	865.574.7827
Randy Pepler	Data Quality Office	<a href="mailto:rpepler@ou.edu">rpepler@ou.edu</a>	405.325.6667
Jim Liljegren	Instrument Coordinator	<a href="mailto:jliljegren@anl.gov">jliljegren@anl.gov</a>	630.252.9540
Kevin Widener	Chief Engineer	<a href="mailto:kevin.widener@pnl.gov">kevin.widener@pnl.gov</a>	509.375.2487
Dick Eagan	Data System Coordinator	<a href="mailto:dick.eagan@anl.gov">dick.eagan@anl.gov</a>	630.252.3435
Rick Wagener	External Data Center Manager	<a href="mailto:wagener@bnl.gov">wagener@bnl.gov</a>	631.344.5886
Todd Halter	Lead Software Developer	<a href="mailto:todd.halter@pnl.gov">todd.halter@pnl.gov</a>	509.375.2979
Nicole Keck	Data Management Facility Manager	<a href="mailto:nicole.keck@pnl.gov">nicole.keck@pnl.gov</a>	509.375.6479
Chuck Long	Lead Science Translator	<a href="mailto:chuck.long@pnl.gov">chuck.long@pnl.gov</a>	509.372.4917

Science Translators and Value Added Products



# Infrastructure Overview

## Key Contacts

Rosemary Ross	Technical Coordination Office	<a href="mailto:rosemary.ross@pnl.gov">rosemary.ross@pnl.gov</a>	509.375.2111
Luci Walker	Financial Administration	<a href="mailto:lucille.walker@pnl.gov">lucille.walker@pnl.gov</a>	509.375.2810
Laurel Chapman	Field Campaigns	<a href="mailto:lachapman@anl.gov">lachapman@anl.gov</a>	630.252.2887
Susan Turner	Contracting	<a href="mailto:susan.turner@pnl.gov">susan.turner@pnl.gov</a>	509.375.3810
Rolanda Jundt	Website Development	<a href="mailto:rolanda.jundt@pnl.gov">rolanda.jundt@pnl.gov</a>	509.375.2936
Nancy Burleigh	Communications and Publications	<a href="mailto:nancy.burleigh@pnl.gov">nancy.burleigh@pnl.gov</a>	509.375.2785
Lynne Roeder	Public Information Officer	<a href="mailto:lynne.roeder@pnl.gov">lynne.roeder@pnl.gov</a>	509.372.4331
Jan Gunter	Engineering Administrator	<a href="mailto:janice.gunter@pnl.gov">janice.gunter@pnl.gov</a>	509.375.6580
Jimmy Voyles	Technical Director / <b>IMB</b>	<a href="mailto:jimmy.voyles@pnl.gov">jimmy.voyles@pnl.gov</a>	509.372.4856
Doug Sisterson	Operations Manager / <b>IMB</b>	<a href="mailto:dlsisterson@anl.gov">dlsisterson@anl.gov</a>	630.252.5836
Sylvia Edgerton	Science Liaison / <b>IMB</b>	<a href="mailto:sylvia.edgerton@pnl.gov">sylvia.edgerton@pnl.gov</a>	703.300.4290
Raymond McCord	Archive Manager / <b>IMB</b>	<a href="mailto:mccordra@ornl.gov">mccordra@ornl.gov</a>	865.574.7827
Randy Pepler	Data Quality Office	<a href="mailto:rpepler@ou.edu">rpepler@ou.edu</a>	405.325.6667
Jim Liljegren	Instrument Coordinator	<a href="mailto:jliljegren@anl.gov">jliljegren@anl.gov</a>	630.252.9540
Kevin Widener	Chief Engineer	<a href="mailto:kevin.widener@pnl.gov">kevin.widener@pnl.gov</a>	509.375.2487
Dick Eagan	Data System Coordinator	<a href="mailto:dick.eagan@anl.gov">dick.eagan@anl.gov</a>	630.252.3435
Rick Wagener	External Data Center Manager	<a href="mailto:wagener@bnl.gov">wagener@bnl.gov</a>	631.344.5886
Todd Halter	Lead Software Developer	<a href="mailto:todd.halter@pnl.gov">todd.halter@pnl.gov</a>	509.375.2979
Nicole Keck	Data Management Facility Manager	<a href="mailto:nicole.keck@pnl.gov">nicole.keck@pnl.gov</a>	509.375.6479
Chuck Long	Lead Science Translator	<a href="mailto:chuck.long@pnl.gov">chuck.long@pnl.gov</a>	509.372.4917

Infrastructure Management

# Infrastructure Overview

## Closing Points

- Your feedback is important to us!
- Because you provide feedback—we have more opportunities to improve
- Please refer to the handouts in your registration package for additional helpful information
- The ARM Website is a valuable information resource:  
“[www.arm.gov](http://www.arm.gov)”
- Please call or send e-mail if you have any questions

# Infrastructure Overview

*Thank You*

*Questions?*

# Infrastructure Overview

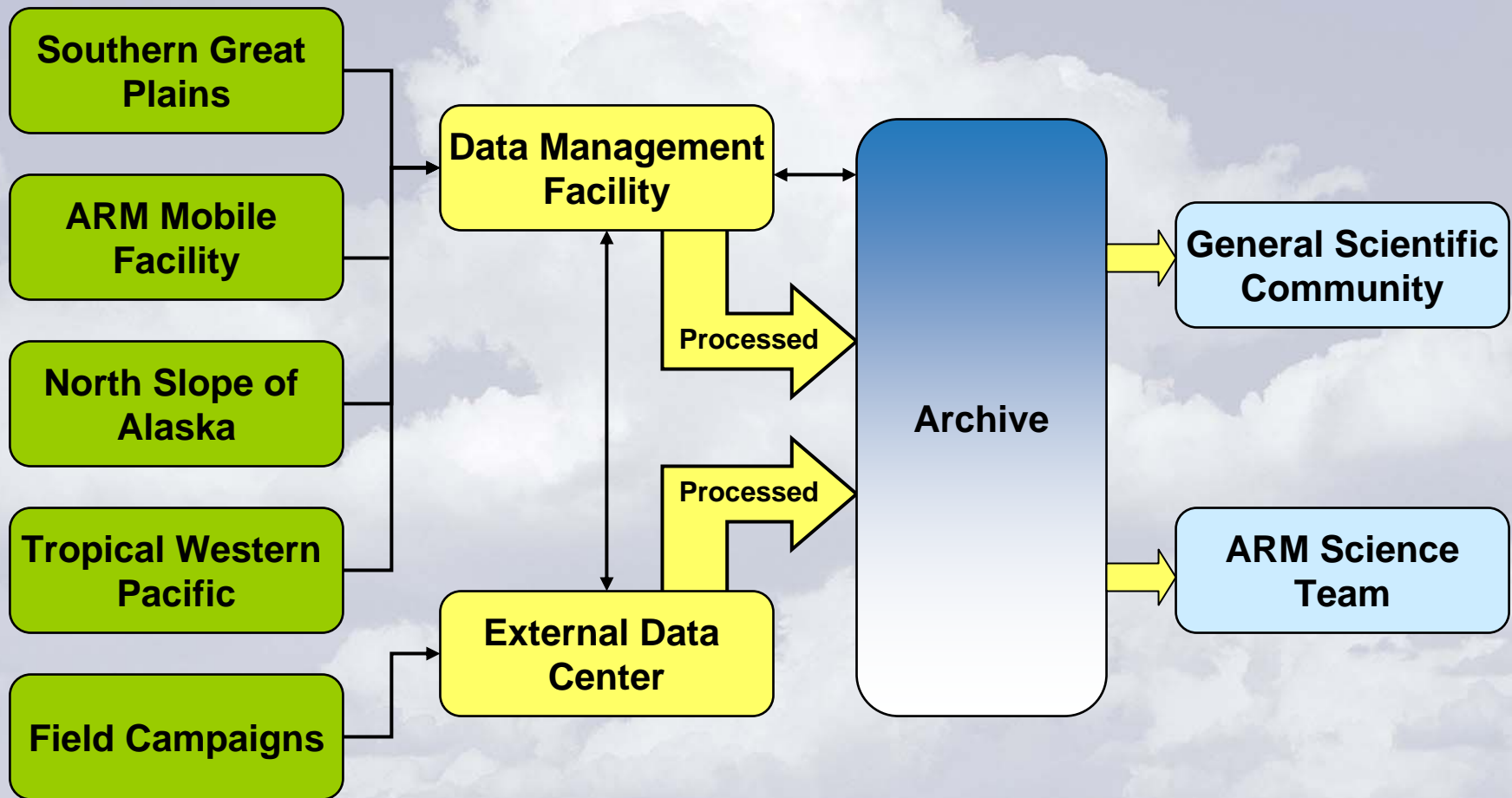
## BACKUP INFORMATION





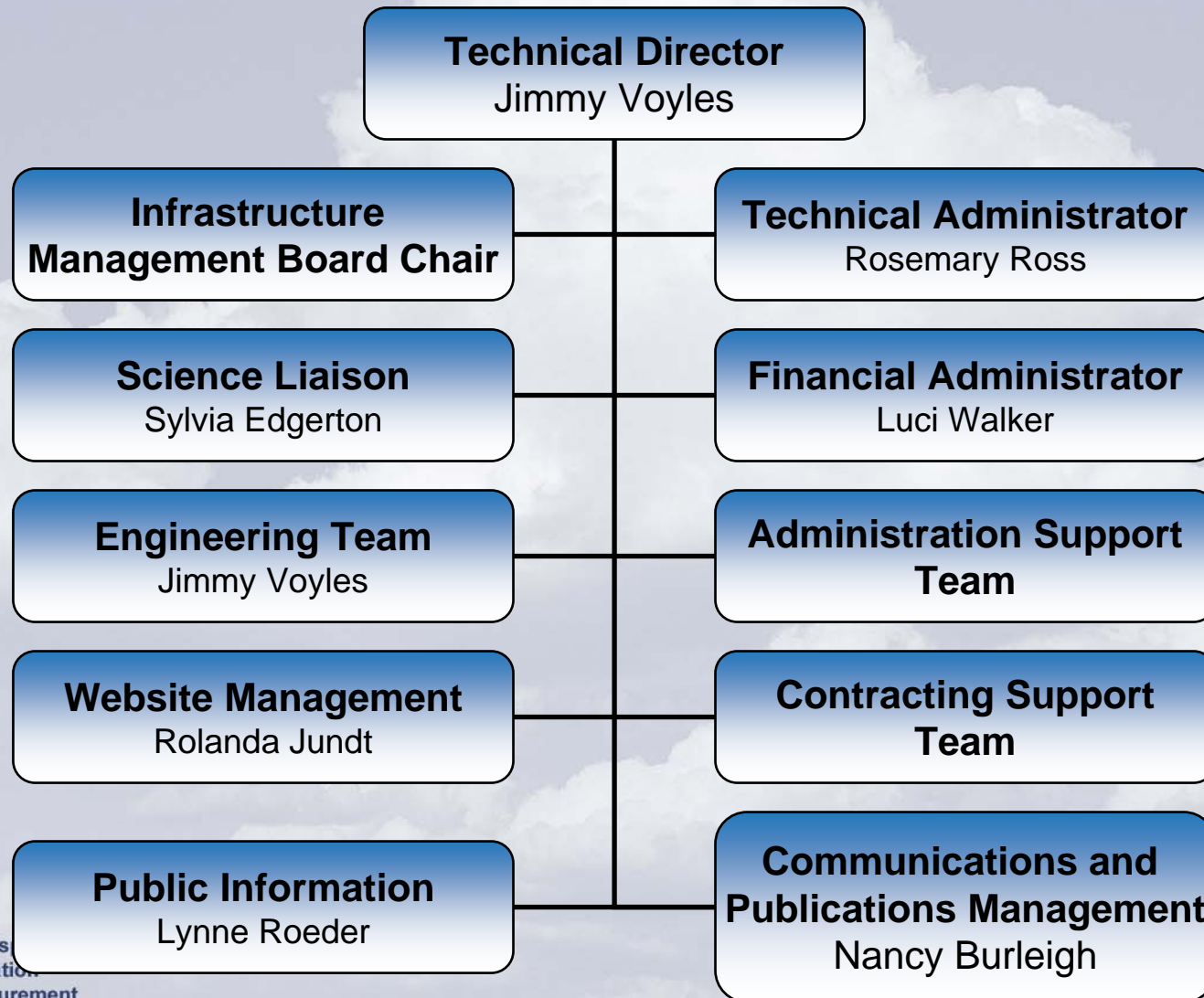
# Infrastructure Overview

## Key Contacts



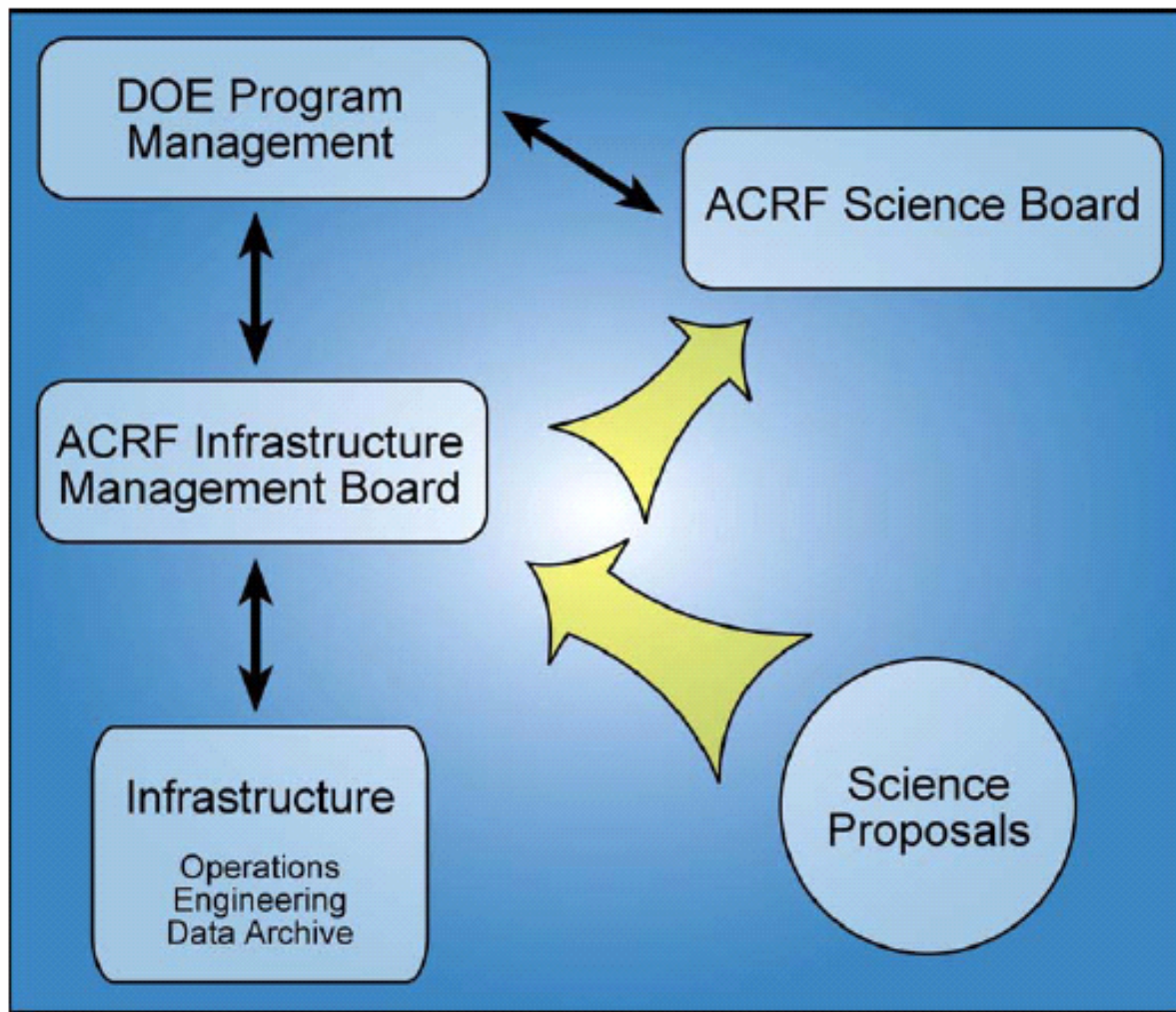
# Infrastructure Overview

## Technical Coordination Office



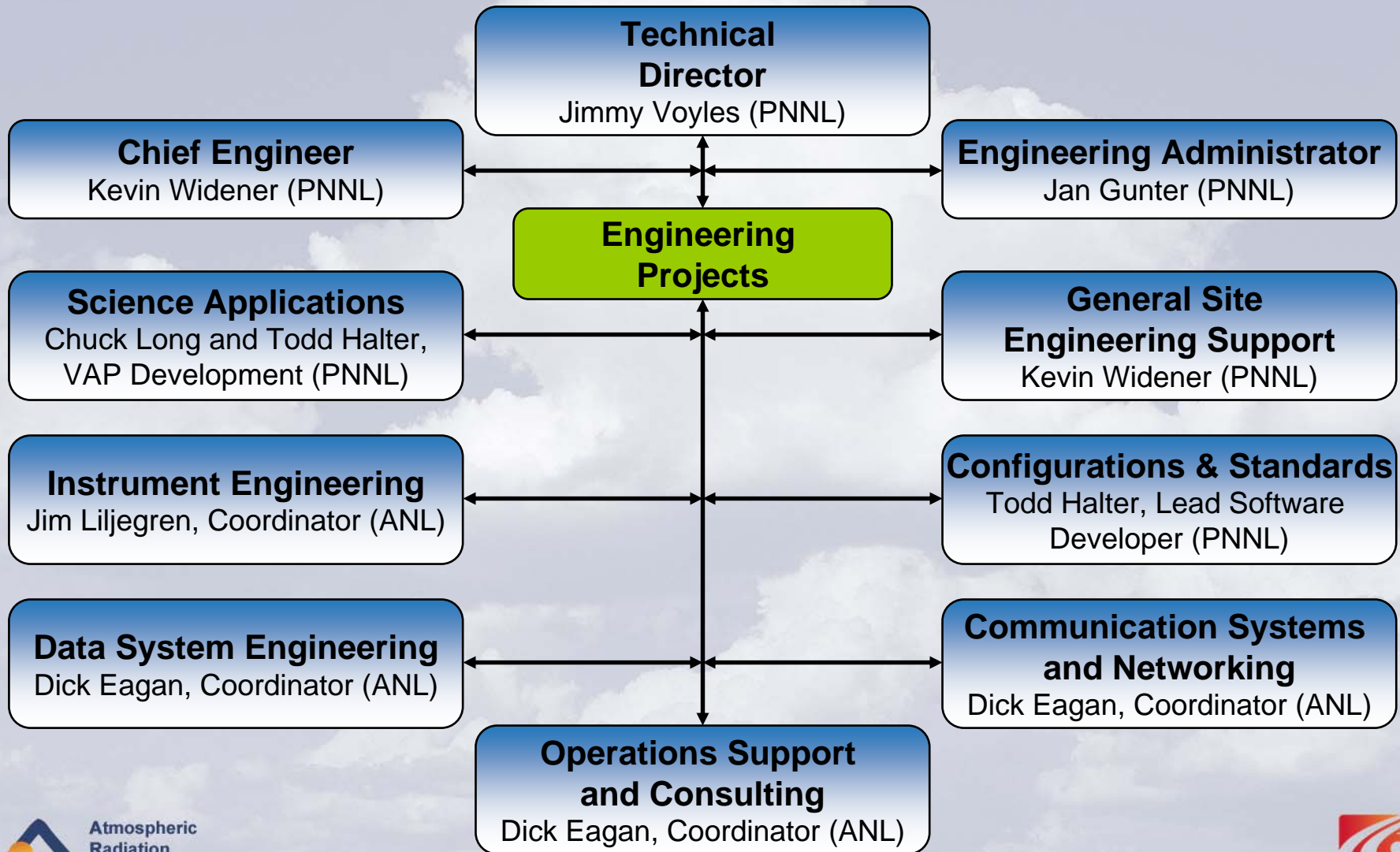
# Infrastructure Overview

## Field Campaign Proposals



# Infrastructure Overview

## Engineering





# Infrastructure Overview

## Science Applications

**Chief Scientist:** Warren Wiscombe  
**Lead Translator:** Chuck Long

**Technical Director:** Jimmy Voyles  
**Lead Software Developer:** Todd Halter

**Working Group**  
Translator  
**Lead Scientist**

**Instantaneous Radiative Flux**  
Chuck Long  
Bob Ellingson

Tim Shippert  
Katarina Younkin  
Yan Shi  
Chaomei Lo

**Aerosols**  
Connor Flynn  
Beat Schmid

Annette Koontz  
Chaomei Lo  
Chitra Sivaraman  
Jason Christy

**Clouds with Low Optical  
(Water) Depths**  
Jennifer Comstock  
Andy Vogelmann

Krista Gaustad  
Chitra Sivaraman  
Rick Mahon  
Jason Christy

**Cloud Properties**  
Mark Miller  
Greg McFarquhar

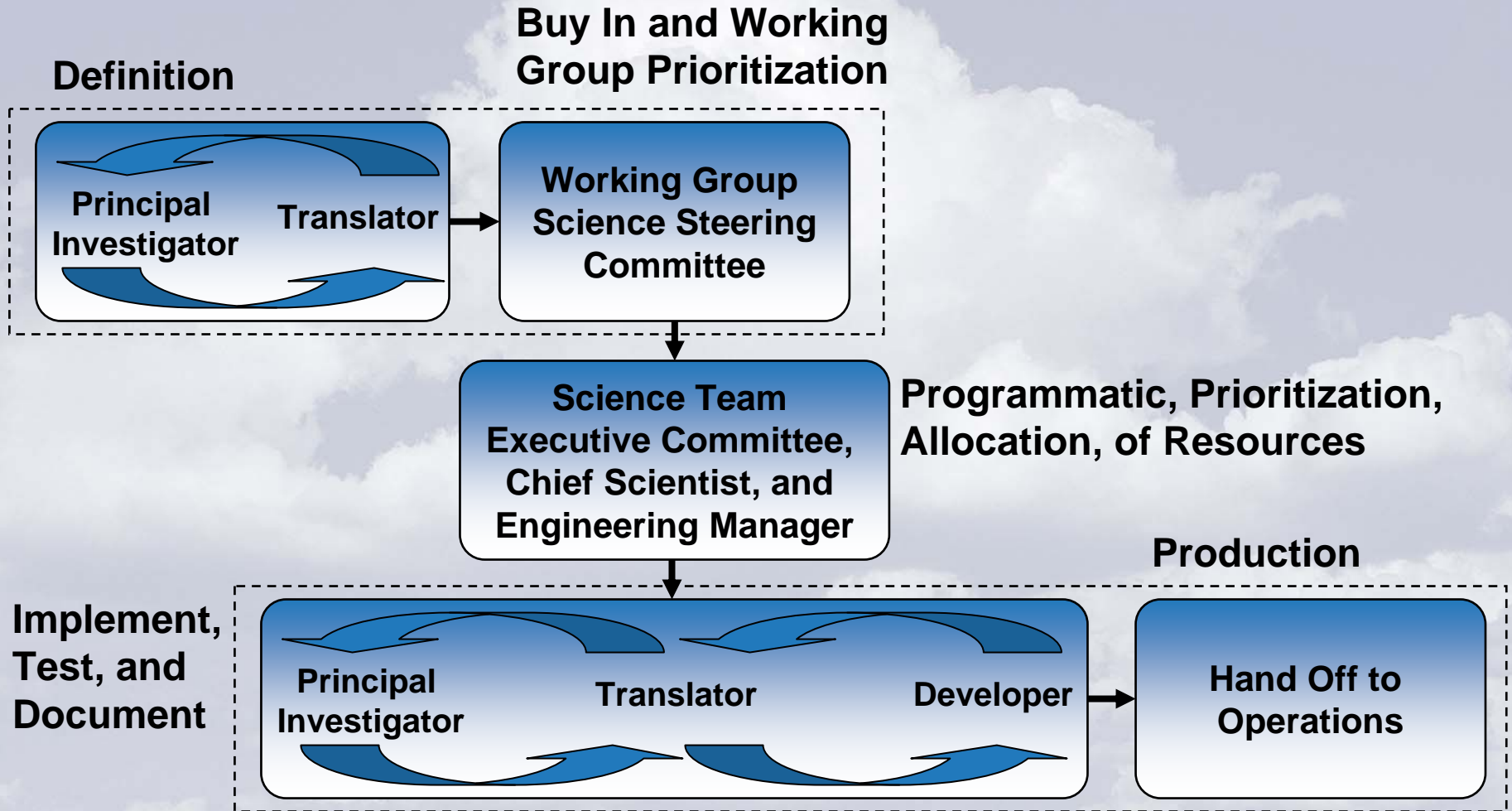
Karen Johnson  
Yan Shi  
Dave Troyan

**Cloud Parameterization  
and Modeling**  
Steve Klein  
Shaocheng Xie

Renata McCoy

# Infrastructure Overview

## Value Added Product Development



# Infrastructure Overview

## Operations

